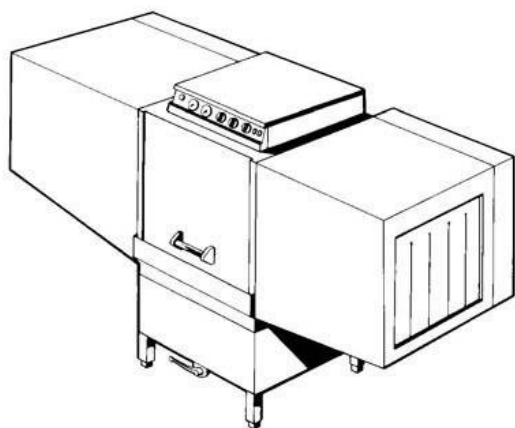


winterhalter

Spare Parts List GKTS 2600

Edited 3/93
Revised 02/05

Part no. 89000850



Summary

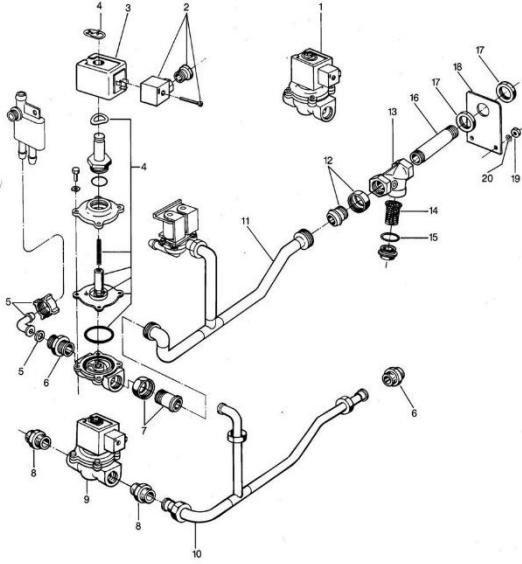
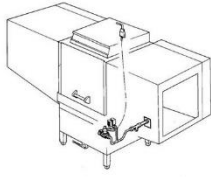
Water Supply	Page 1 and 2
Water Inlet, Tank Heating, Rinsing, Rack Programme	Page 3 and 4
Water Drain I	Page 5 and 6
Water Drain II	Page 7 and 8
Wash System I Pump	Page 9 and 10
Lower Wash System II	Page 11 and 12
Upper Wash System III	Page 13 and 14
Rinsing I	Page 15 and 16
Rinsing II	Page 17 and 18
Dosing	Page 19 and 20
Rack Guide, Pressure Pad	Page 21 and 22
Rack Insert, Transport System until mach. no. 214 507	Page 23a and 23b
Rack Insert, Transport System from mach. no. 214 508	Page 24a and 24b
Door	Page 25 and 26
Base Frame, Panel, Curtain	Page 27 and 28
Electrical Parts I	Page 29 and 30
Electrical Parts II	Page 31 and 32
Electrical Parts III	Page 33 and 34

In column "Pcs." the necessary number is indicated, as far as more than 1 part is installed and if the part is no standard part.

Parts that have the note " Part made to order only!" are not in stock. This parts are made specially for your order and have a delivery time. They are not returnable.

GKTS 2600

Wasserzulauf
Water supply
Alimentation d'eau



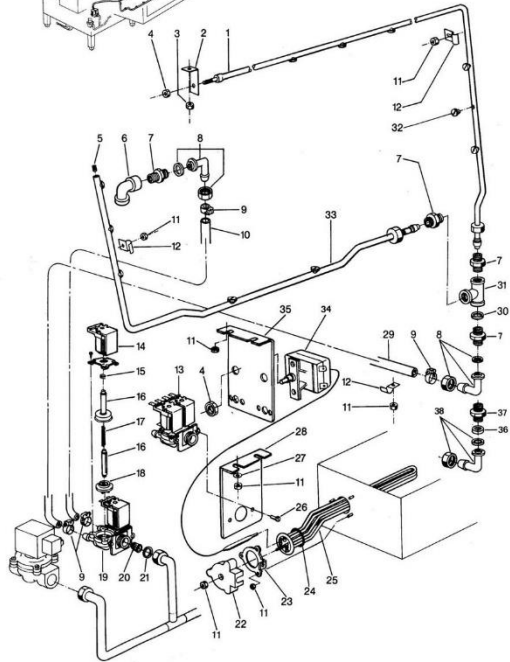
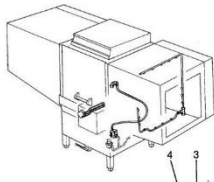
GKTS 2600

Water Supply

Pos.	Designation	Part No.	Pcs.	Notes
1	Solenoid valve 3/4" BSP; 220 V 50 Hz	31 06 089		until machine no. 201 379
2	Connector plug	31 06 082		for pos. 1 + 9
3	Coil 220 V 50 Hz	31 06 083		
n.p.	Coil 240 V 50 Hz	31 06 090		
n.p.	Coil 220 V 60 Hz	31 06 111		
4	Repair kit	31 06 115		
5	Angle screwing 3/4" BSP x 18	29 06 515		
6	Double nipple 3/4" BSP	30 11 207	2	until mach. no. 201 379
7	Screwing 3/4" BSP x 18	30 03 106		
8	Reducing nipple 3/4" BSP x 1/2" BSP	30 06 121	2	
9	Solenoid valve 1/2" BSP, 220 V 50 Hz	31 06 080		from mach. no. 201 380 onwards
10	Feed pipe cpl.	55 05 031		
11	Feed pipe cpl.	55 05 031		until mach. no. 201 379
12	Screwing 3/4" BSP	30 03 105		
13	Dirt trap 3/4" BSP	28 07 101		
14	Sieve for dirt trap	28 07 201		
15	Seal \varnothing 34 x \varnothing 27 x 2	27 09 025		
16	Running nipple 3/4" BSP x 155	65000224		
17	Locking nut 3/4" BSP x 5	61002626	2	
18	Retaining plate for water inlet	65000149		Part made to order only!
19	Hexagon nut M 6	21 01 304		
20	Spring washer B 6	23 03 300		
Steam valves on request				

GKTS 2600

**Wassereinlauf, Tankheizung
Nachspülung - Korbprogramm**
Water inlet, tank heating, rinsing,
rack programme
Arrivée d'eau, chauffage de la cuve,
rinçage - programme des paniers



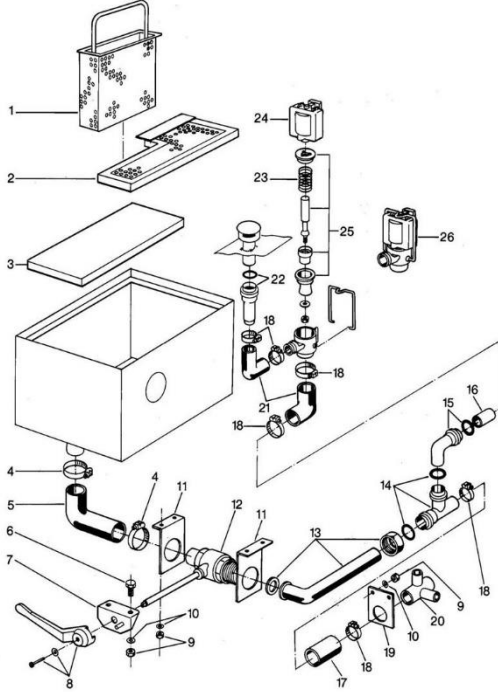
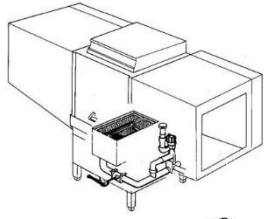
GKTS 2600

Water Inlet, Tank Heating, Rinsing, Rack Programme

Pos.	Designation	Part no.	Pcs.	Notes
1	Top rinse pipe cpl.	65001819		
2	Angle 2,0 x 20 x 86	65001233		
3	Hexagon nut M 6	21 01 304		
4	Hexagon nut M 8	21 01 305		
5	Grub-screw M 11 x 1 x 20	20 30 503		
6	Angle 1/2" BSP x 18	30 02 202		
7	Double nipple 1/2" BSP x 30	70000459	3	
8	Angle connection	29 06 238	2	until mach. no. 216 487
9	Hose clip ø 14 - ø 24	28 02 108	4	
10	Reinforced hose 13,5 x 3,5 x 1500	40 02 029		per metre
11	Hexagon nut M 5	21 01 303		
12	Pipe clamp 1,25 x 20 x 48	55 04 057	2	
13	Double solenoid valve 220 V 50 Hz	31 06 182		
14	Combined coil			Replaced by pos. 13
15	Spring			
16	Plunger with bush			
17	Spring			
18	Diaphragm			
19	Base part of solenoid valve			
20	Dirt sieve red	31 06 118		
21	Seal ø 24 x ø 17 x 2	27 09 009		
22	Cover for heating element	31 03 014		
23	Clamping plate cpl.	55 19 018		
24	O-ring ø 43 x 7	27 07 069		
25	Heating elem. cranked 220/380V; 9kW	31 03 018		
n.p.	Heating elem. cranked 240/420V; 9kW	31 03 057		
26	Pan head screw M 4 x 8	20 10 210		
27	Washer ø 5,3	22 01 300		
28	Solenoid valve support	65000116		Part made to order only!
29	Reinforced hose 13,5 x 3,5 x 1700	40 02 029		per metre
30	Seal ø 28 x ø 21 x 2	27 09 011		
31	T-piece 1/2" BSP	30 04 100		
32	Flat rinse jet 1/16 NPT	29 10 313	11	
33	Bottom rinse pipe cpl.	65001818		
34	Safety thermostat 140°C	31 25 030		as from mach. no. 214 501
35	Thermostat support	65002459		
36	Flow meter	31 06 103		as from mach. no. 216 488
37	Reducing nipple 1/2" BSP x 3/4" BSP x 29	61003430		
38	Angle screwing 3/4" BSP x 18	29 06 515		

GKTS 2600

Wasserablauf I
Water drain I
Ecoulement d'eau I



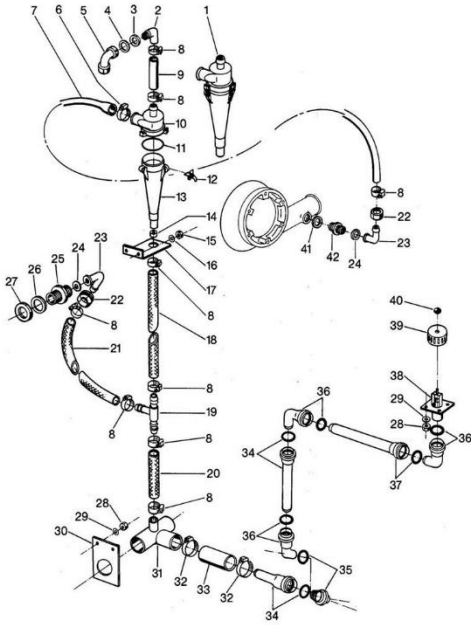
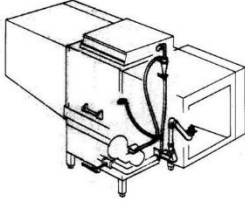
GKTS 2600

Water Drain I

Pos.	Designation	Part no.	Pcs.	Notes
1	Sump sieve cpl.	65001833		
2	Cover for sump box II cpl.	65001838		
3	Cover for sump box I cpl.	80001728		
4	Hose clip \varnothing 62 - \varnothing 82	28 02 120	2	
5	Suction elbow \varnothing 62 x 9; 80 x 120	40 03 028		
6	Hexagon bolt M 6 x 16	20 01 306		
7	Support for selector shaft cpl.	55 02 015		
8	Handle for drain valve	29 03 248		
9	Hexagon nut M 6	21 01 304		
10	Spring washer B 6	23 03 300		
11	Support for drain valve	55 02 014	2	
12	Drain valve with extended selector shaft	29 03 204		
13	Drain elbow cpl. 2" BSP x \varnothing 50	30 15 517		
o.p.	Gasket to pos. 13	30 15 541		
14	Plastic Tee \varnothing 50 x \varnothing 50 x \varnothing 50	30 15 516		
15	Plastic elbow \varnothing 50; 87 degrees	30 15 508		
16	Plastic pipe \varnothing 50 x 250	30 15 518		shortened to 70 mm
17	Reinforced hose \varnothing 50 x 4,5 x 120	40 02 012		per metre
18	Hose clip \varnothing 47 - \varnothing 67	28 02 115	6	
19	Supporting plate for drain	65000141		Part made to order only!
20	Mediamat drain cpl.	65001920		Part made to order only!
21	Angle socket \varnothing 50 x 4; 67 x 67	40 03 013	2	
22	Plastic pipe \varnothing 50 x 250	30 15 518		shortened to 150mm
23	Spring	31 06 119		
24	Coil			
n.p.	Coil 240 V 50 Hz	no more available		replaced by: 31 06 045
n.p.	Coil 220 V 60 Hz			
25	Diaphragm	31 06 137		
26	Drain solenoid valve NW \varnothing 50	31 06 060		

GKTS 2600

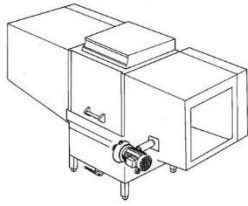
Wasserablauf II
Water drain II
Ecoulement d'eau II



GKTS 2600

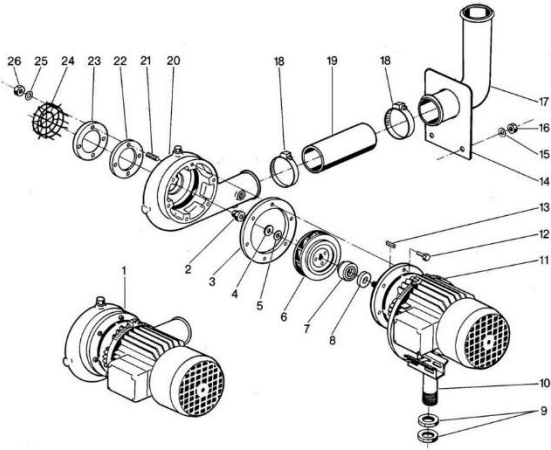
Water Drain II

Pos.	Designation	Part no.	Pcs.	Notes
1	Mediamat cpl.	55 27 040		
2	Mediamat connection 1/2" BSP x 18	55 31 001		
3	Locking nut 1/2" BSP x 8	30 09 201		
4	Seal ø 28 x ø 21 x 2	27 09 011		
5	Angle 1/2" BSP x 18	30 02 202		
6	Hose clip ø 32 - ø 52	28 02 110		
7	Reducing hose ø 30/16 x 5 x 1300	40 03 036		
8	Hose clip ø 20 - ø 30	28 02 109	8	
9	Reinforced hose ø 16 x 4 x 100	40 01 015		per metre
10	Head piece inlet	35 01 124		
11	O-ring ø 51 x 3	27 07 043		
12	End piece locking	28 04 041	4	
13	Accelerator	35 01 035		
14	Insert for Mediamat	35 01 123		
15	Hexagon nut M 4	21 01 302		
16	Washer ø 4,3	22 02 202		
17	Supporting angle for Mediamat	61000658		
18	Fabric hose 19 x 4 x 900	40 01 016		per metre
19	Tee hose connection piece ø 19	29 06 512		
20	Fabric hose 19 x 4 x 100	40 01 016		per metre
21	Fabric hose 19 x 4 x 730	40 01 016		
22	Cap nut 3/4" BSP x ø 21 x 14	29 07 203		
23	Mediamat connection elbow	29 06 524		
24	Seal ø 24 x ø 19,5 x 1,5	27 09 010		
25	Double nipple for overflow cpl.	55 04 031		
26	Seal ø 42 x ø 27 x 2	27 09 003		
27	Locking nut narrow 3/4" BSP x 5	61002626		
28	Hexagon nut M 6	21 01 304		
29	Spring washer B 6	23 03 300		
30	Supporting plate for drain	65000141		Part made to order only!
31	Mediamat drain cpl.	65001920		
32	Hose clip ø 47 - ø 67	28 02 115	2	
33	Reinforced hose ø 38 x 4 x 90	40 02 014		per metre
34	Plastic pipe ø 40 x 250	30 15 503	2	
35	Plastic elbow ø 40; 45 degrees	30 15 506	1	
36	Plastic elbow ø 40; 87 degrees	30 15 505	3	
37	Plastic pipe ø 40 x 500	30 15 502	1	
38	Drain socket cpl.	65001820		Part made to order only!
39	Sieve cover ø 55 x 35	02 06 034		
40	Ball button ø 25; M 6	28 05 010		
41	O-ring ø 20 x 3,5	27 07 040		
42	Mediamat conn. nipple 1/2" BSP x 3/4" BSP x 32	30 11 502		



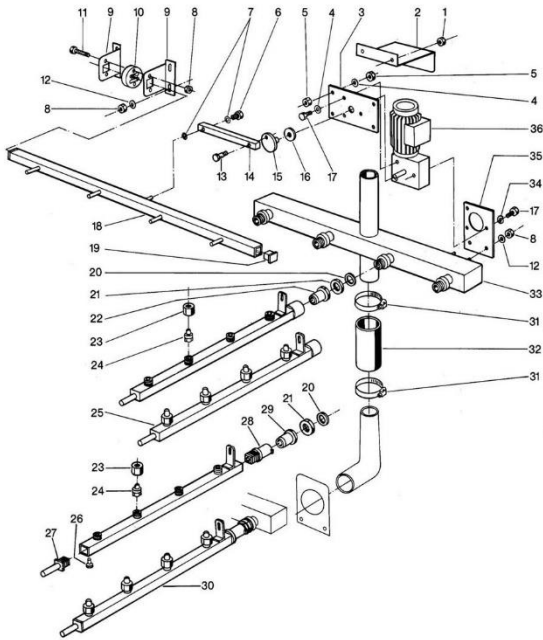
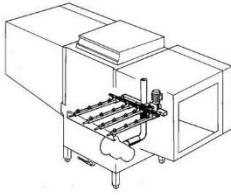
GKTS 2600

Waschsystem I Pumpe
Wash system I pump
Système de lavage I pompe



GKTS 2600

Waschsystem II unten
Lower wash system II
Système de lavage II inférieur



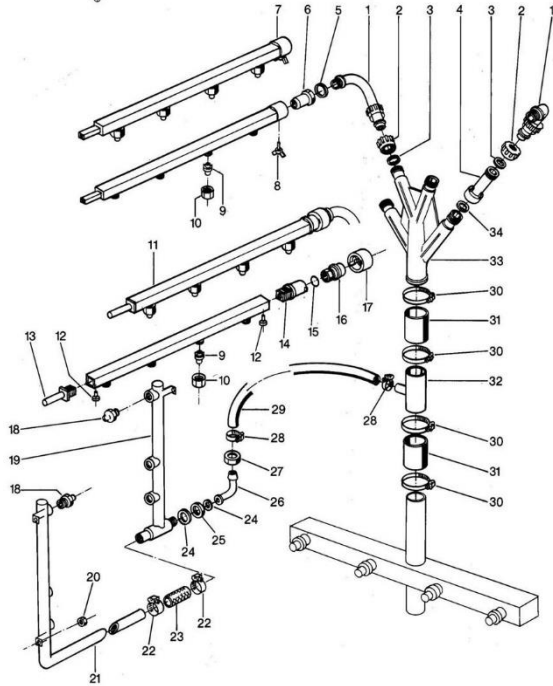
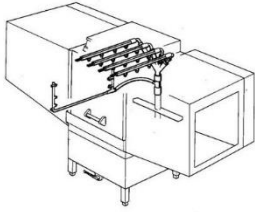
GKTS 2600

Lower Wash System II

Pos.	Designation	Part no.	Pcs.	Notes
1	Hexagon nut M 5	21 05 302		self-securing
2	Cover for gearmotor	65000244		Part made to order only!
3	Adjusting plate	65000239		Part made to order only!
4	Washer \varnothing 8,4	22 01 303		
5	Hexagon nut M 8	21 01 305		
6	Hexagon bolt M 5 x 10	20 01 300		
7	Washer \varnothing 5,3	22 01 300		
8	Hexagon nut M 6	21 01 304		
9	Support for drive rod	65000238	2	Part made to order only!
10	Sliding block for drive rod	35 01 211		
11	Hexagon bolt M 6 x 30	20 01 307		
12	Washer \varnothing 6,4	22 01 302		
13	Crank pin SW 17 x 34	55 08 035		
14	Connecting plate 15 x 20 x 200	55 08 034		
15	Eccentric pulley \varnothing 70 x 37	65001330		
16	Shaft seal	27 08 003		
17	Hexagon bolt M 8 x 16	20 01 302		
18	Drive rod cpl.	65000237		
19	Bush	35 03 016	2	
20	Seal \varnothing 42 x \varnothing 27 x 2	27 09 003	4	
21	Locking nut 3/4" BSP x 10	30 09 209	4	
22	Bush SW 36 x 40; 3/4" BSP	35 01 177	4	until mach. no. 201 353
23	Coupling nut for wash jet 1/2" BSP	29 10 532	16	
24	Wide spread jet \varnothing 18 x 25	29 10 509	16	
25	Lower wash arm cpl.	65000196	4	until mach. no. 201 353
26	Sheet metal screw B 2,9 x 6,5	20 20 308		
27	Guide piece 30 x 30 x 73,5	65002080	4	
28	Wash arm head \varnothing 44 x 69	65002079	4	from mach. no. 201 354 onwards
29	Bush SW 36 x 40	65002085	4	
30	Lower wash arm cpl.	65002262	4	
31	Hose clip \varnothing 47 - \varnothing 67	28 02 115	2	
32	Pump hose \varnothing 50 x 8 x 160	40 02 006		per metre
33	Lower distributor cpl.	65000199		Part made to order only!
34	Spring washer B 8	23 03 301		
35	Support for gearmotor	65000246		
36	Reversing motor 0,12 kW 220/380 V 50 Hz	31 16 021		
n.p.	Reversing motor 0,12 kW 220/380 V 60 Hz	31 16 039		
n.p.	Reversing motor 0,09 kW 240-420 V 50 Hz	31 16 021		

GKTS 2600

Waschsystem III oben
Upper wash system III
Système de lavage supérieur III



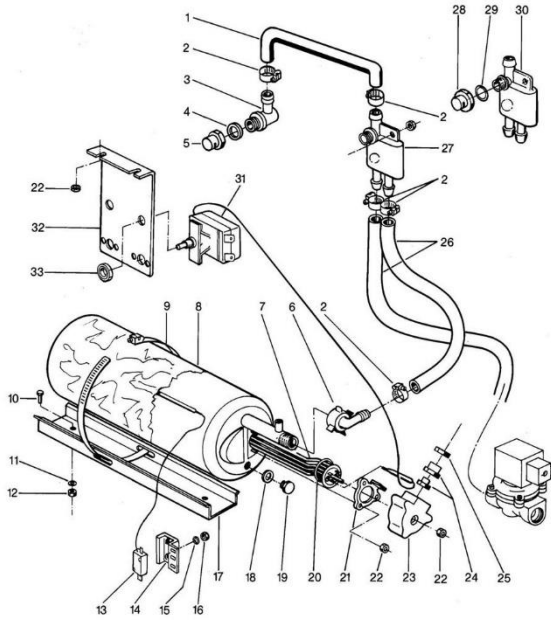
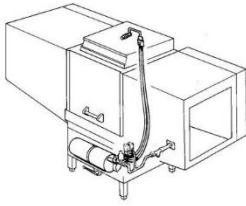
GKTS 2600

Upper Wash System III

Pos.	Designation	Part no.	Pcs.	Notes
1	Distributor elbow 3/4" BSP	35 01 005	4	
2	Cap nut	35 01 004	4	
3	O-ring ø 24 x 3	27 07 066	4	
4	Extension piece 1 1/4" BSP x 133	35 01 003	2	
5	Seal ø 36 x ø 26 x 2	27 01 003	4	
6	Bush SW 36 x 40; 3/4" BSP	35 01 177	4	
7	Upper wash arm cpl.	65000195	4	until mach. no. 201 353
8	Wing screw M 6 x 10	20 06 332	4	
9	Wide spread jet white ø 18 x 25	29 10 509	16	
10	Coupling nut for wash jet	29 10 532	16	
11	Upper wash arm cpl.	65002265	4	from mach. no. 201 354 onwards
12	Sheet-metal screw B 2,9 x 6,5	20 20 308	4	
13	Guide piece 30 x 30 x 73,5	65002080	4	
14	Wash arm head ø 44 x 69	65002079	4	
15	O-ring ø 28 x 2,5	27 07 049	4	
16	Locking nut 3/4" BSP	61004059	4	
17	Lock ring ø 49 x 28	61002023	4	
18	Slotted jet 1/2" BSP, SW 24	29 10 514	6	
19	Rear wash arm cpl.	65001806		Part made to order only!
20	Hexagon nut M 6	21 05 304		self-securing
21	Front wash arm cpl.	65001811		Part made to order only!
22	Hose clip ø 24 - ø 44	28 02 309	2	
23	Reinforced hose ø 19 x 4 x 65 lg.	40 01 016		per metre
24	Seal ø 24 x ø 19,5 x 1,5	27 09 010		
25	Locking nut 3/4" BSP	29 07 203		
26	Mediamat connection elbow	29 06 524		
27	Locking nut 3/4" BSP x ø 21 x 14	29 07 203		
28	Hose clip ø 20 - ø 30	28 02 109	2	
29	Reduction hose ø 16 x 5 x 600 lg.	40 03 036		shortened
30	Hose clip ø 47 - ø 67	28 02 115		
31	Pump hose ø 50 x 8 x 75	40 02 006		per metre
32	Connection socket cpl.	65001815		Part made to order only!
33	Distributor upper part	35 01 017		
34	Seal ø 39 x ø 30 x 2	27 02 001	2	

GKTS 2600

Nachspülung I
Rinsing I
Rinçage I



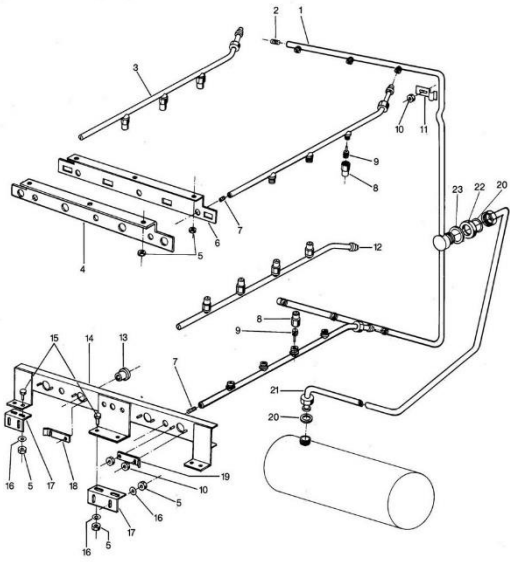
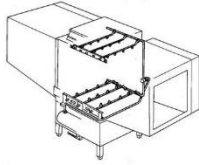
GKTS 2600

Rinsing I

Pos.	Designation	Part no.	Pcs.	Notes
1	Shaped hose \varnothing 13 x 4 x 140	40 03 053		until mach. no. 201 379
2	Hose clip \varnothing 14 - \varnothing 24	28 02 108	3	
3	Connection 1/2" BSP x 14,5	35 01 156		until mach. no. 201 379 cpl. 5531007
4	Seal \varnothing 28 x \varnothing 21 x 2	27 09 011		
5	Water inlet 1/2" BSP x \varnothing 26 x 34			
n.p.	Vent cap with nut.	61005339		
6	Angle screwing 3/4" BSP x 18	29 06 515		
7	Heating element cranked 6 kW 220/380 V	31 03 017		
o.P.	Heating element cranked 6 kW 240/420 V	31 03 043		
8	Boiler body, 1 hole 480 lg.	55 12 035		
9	Hose clip \varnothing 50 x \varnothing 215 x 12	28 02 126		
10	Hexagon bolt M 6 x 16	20 01 306		
11	Spring washer B 6	23 03 300		
12	Hexagon nut M 6	21 01 304		
13	Safety thermostat	31 25 022		until mach. no. 203 410
14	Support for safety thermostat	62001583		
15	Washer \varnothing 4,3	22 02 302		
16	Hexagon nut M 4	21 05 201		self-securing
17	Boiler groove 380 lg.	61002039		
18	Seal \varnothing 18 x \varnothing 10 x 1,5	27 03 003		
19	Hexagon bolt	20 01 352		
20	O-ring \varnothing 46 x 6	27 07 069		
21	Clamping plate cpl.	55 19 018		
22	Hexagon nut M 5	21 01 303		
23	Cover for heating element	31 03 014		
24	Cable gland PG 13,5	31 10 040		
25	Hexagon nut PG 13,5	31 10 041		
26	Reinforced hose 13,5 x 3,5 x 1800	40 02 029		per metre
27	Top back flow restrictor	35 01 193		until mach. no. 201 379
28	Vent cap with nut.	61005339		from mach. no. 201 380 onwards
29	Seal \varnothing 24 x \varnothing 17 x 2,0	27 09 009		
30	Backflow restrictor lateral	35 01 194		
31	Safety thermostat 140°C	31 25 030		from mach. no. 214 501 onwards
32	Thermostat support	65002459		
33	Hexagon nut M 8	21 01 305		

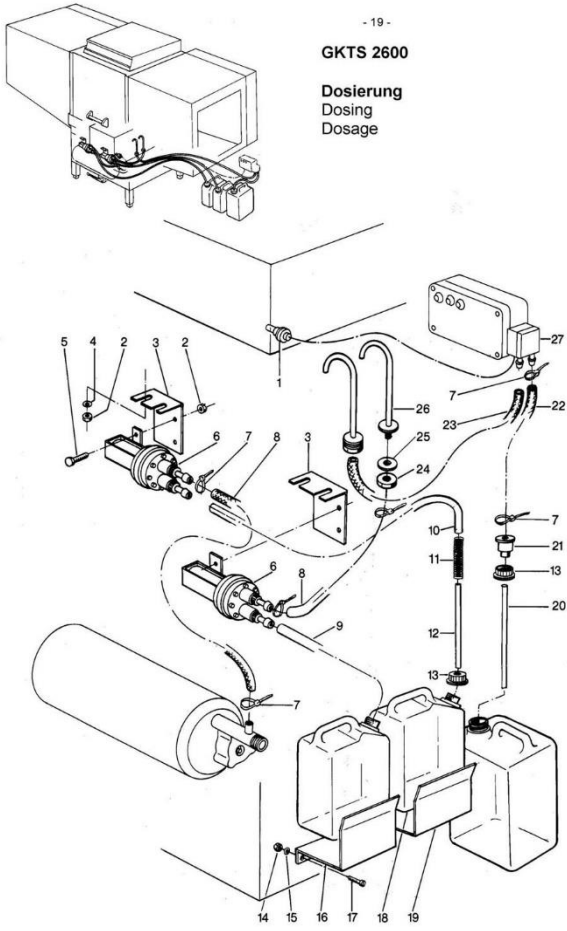
GKTS 2600

Nachspülung II
Rinsing II
Rinçage II



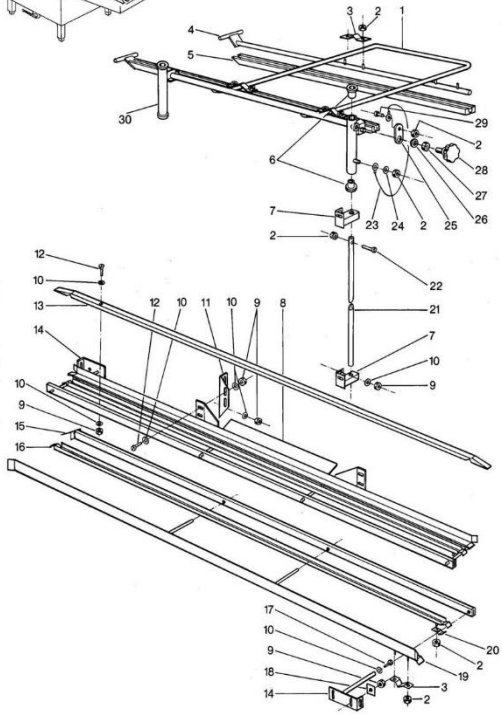
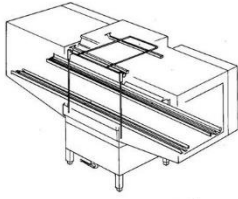
GKTS 2600

Dosierung
Dosing
Dosage



GKTS 2600

Korbführung, Niederhalter
Rack guide, pressure pad
Guidage des paniers, coussin de pression



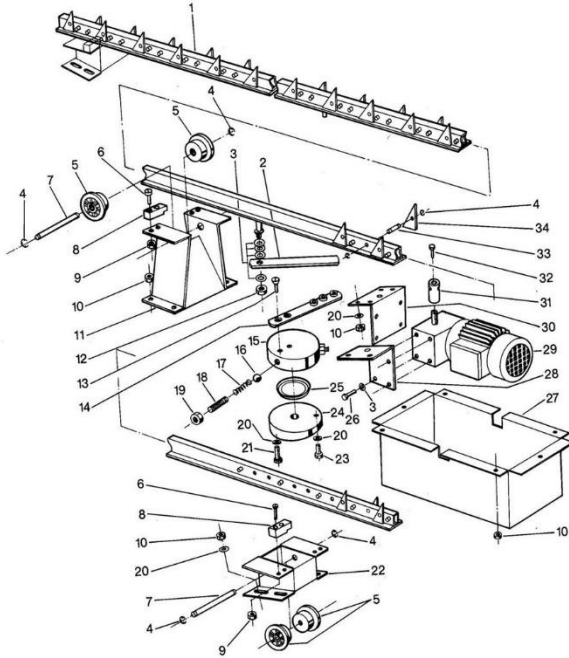
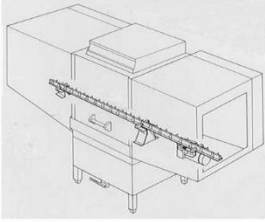
GKTS 2600

Rack Guide, Pressure Pad

Pos.	Designation	Part no.	Pcs.	Notes
1	Pressure pad cpl.	65001902		
2	Hexagon nut M 5	21 05 302		self-securing
3	Clip for pressure pad	65001655	8	
4	Rail cpl. 892 mm lg.	65002062	2	Part made to order only!
5	Sliding bar 18,3 x 19,7 x 860	65002088		
6	Socket for pillar guide \varnothing 30 x 25	65001908	4	
7	Support right cpl.	65001913	2	Part made to order only!
o.P.	Support left cpl.	65001912	2	Part made to order only!
8	Rear rack support	65001787		Part made to order only!
9	Hexagon nut M 6	21 05 304		self-securing
10	Washer \varnothing 6,4	22 01 302		
11	Support left 2,0 x 66 x 164,5	65001785		
o.P.	Support right 2,0 x 66 x 164,5	65001786		
12	Hexagon bolt M 6 x 16	20 01 306		
13	Sliding rail 12 x 20 x 2598	65001797	2	
14	Rear support left cpl.	65001790		Part made to order only!
o.P.	Rear support right cpl.	65001794		Part made to order only!
15	Guide rail cpl.	65001843	2	Part made to order only!
16	Rail cpl.	65001795		
17	Cheese head screw M 6 x 20	20 20 311		
18	Washer 2,0 x 24 x 24; \varnothing 6,3	65002131		
19	Front rack support cpl.	65001781		Part made to order only!
20	Clamping lug 1,5 x 20 x 27	62000498	4	
21	Axle \varnothing 15 x 800	65001916	2	
22	Hexagon bolt M 5 x 25	20 01 311		
23	Tilt resistance I	28 06 007		
24	Washer \varnothing 5,3	22 01 300		
25	Protective plate 1,5 x 17,5 x 30	65001918		
26	Washer \varnothing 10,5	22 02 206		
27	Hexagon nut M 10	21 05 308		self-securing
28	Star handle screw M 10 x 30	20 06 333		
29	Pan head screw M 5 x 10	20 10 322		
30	Pressure pad guide cpl.	65001945		

GKTS 2600

**Korbeinschub, Transportsystem
bis Masch. N. 214 507**
Rack insert, transport system
Introduction des paniers, système
de transport



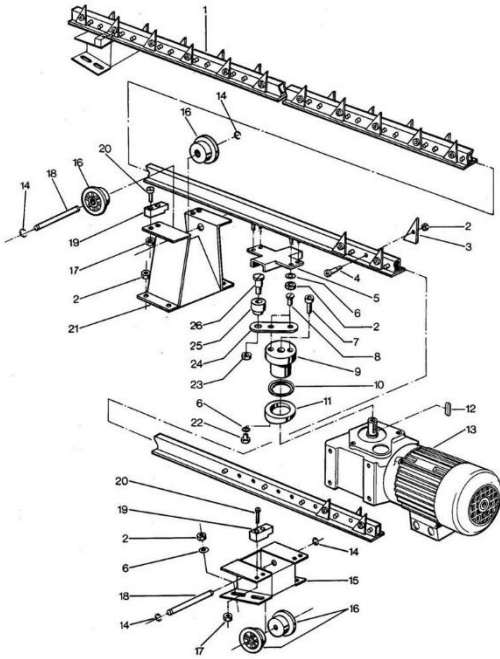
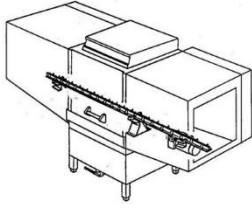
GKTS 2600

Rack Insert, Transport System until mach. no. 214 507

Pos.	Designation	Part no.	Pcs.	Notes
1	Drive rod left-right cpl.	65001798		Part made to order only!
2	Connecting plate cpl.	65001324		
3	Washer \varnothing 8,4	22 01 303		
4	Locking ring \varnothing 6	23 10 304	92	
5	Spacer \varnothing 50 x 21	35 01 065	6	
6	Cheese head screw M 5 x 16	20 09 324		
7	Pin \varnothing 8 x 70	65001350		
8	Guide piece 20 x 20 x 50	65001805	6	
9	Hexagon nut M 5	21 05 302		self-securing
10	Hexagon nut M 6	21 05 304		
11	Guide frame cpl.	65001355	1	Middle Part made to order only!
12	Hexagon nut M 8	21 05 306		self-securing
13	Counter sunk head screw M 8 x 16	20 03 301		
14	Driving clip	65001325		
15	Eccentric plate \varnothing 100 x 30	65001329		
16	Ball 3/8"	28 01 040		
17	Tension spring 19,7 x \varnothing 9,2 x \varnothing 2,0	28 04 028		
18	Threaded pin M 12 x 30	20 31 321		
19	Hexagon nut M 12	21 02 307		
20	Washer \varnothing 6,4	22 01 302		
21	Hexagon bolt M 6 x 16	20 01 306		
22	Guide frame cpl.	65001801	2	outside
23	Hexagon bolt M 6 x 10	20 01 332		
24	Surface plate \varnothing 115 x 19	65001327		
25	Shaft gasket	27 08 003		
26	Hexagon bolt M 8 x 16	20 01 302		
27	Cover for motor cpl.	65001257		
28	Motor support cpl.	65001323		
29	Reversing motor 0,12 kW 220/380 V 50 Hz	31 16 021		
n.p.	Reversing motor 0,12 kW 220/380 V 60 Hz	31 16 039		
n.p.	Reversing motor 0,09 kW 240-420 V 50 Hz	31 16 021		
30	Motor support 2,5 x 80 x 155	65001326		
31	Driving bush \varnothing 24 x 55	65001328		
32	Hexagon bolt M 5 x 25	20 01 311		
33	Pin \varnothing 8 x 27	65001334	46	
34	Latch for drive rod	65001335	46	

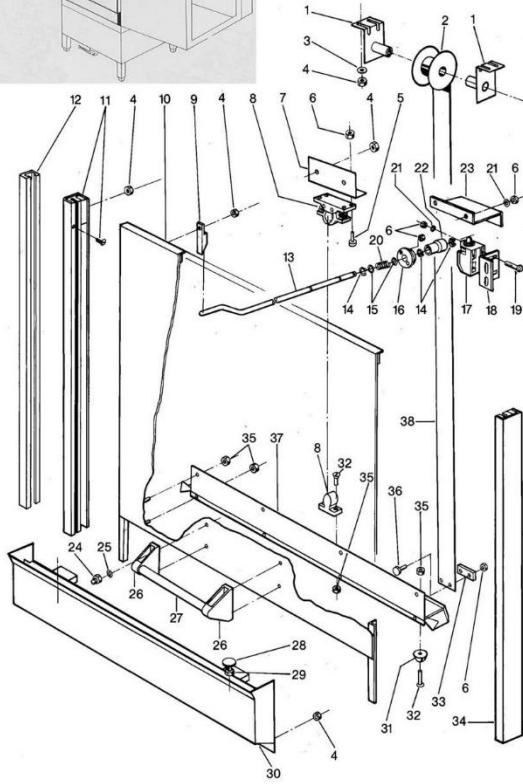
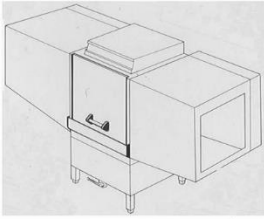
GKTS 2600

**Korbeinschub, Transportsystem
ab Masch. N. 214 508**
Rack insert, transport system
Introduction des paniers, système
de transport



GKTS 2600

Türe
Door
Porte



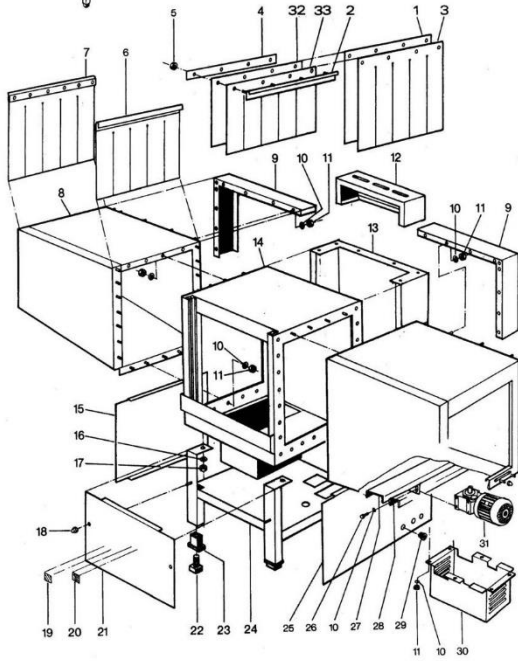
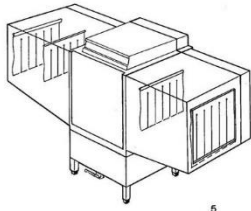
GKTS 2600

Door

Pos.	Designation	Part no.	Pcs.	Notes
1	Spring bracket cpl.	65000406	4	
2	Pulley ø 90 x 24	35 01 160	2	
3	Washer ø 6,4	22 01 302		
4	Hexagon nut M 6	21 05 304		self-securing
5	Pan head screw M 4 x 16	20 10 213		
6	Hexagon nut M 4	21 05 300		self-securing
7	Angle for door catch	55 28 558		Part made to order only!
8	Door catch cpl.	55 15 128		
9	Stopping wedge	55 15 130		
10	Door cpl.	65000422		Part made to order only!
11	Door rail left cpl.	55 15 120		
12	Sliding rail 785 lg.	35 04 038	2	
13	Limit switch rod	65000530		
n.p.	O-Ring to Limit switch rod	27 07 013		
14	Locking ring ø 6	23 10 304		
15	Washer ø 8,4	22 01 303		
16	Bearing for limit switch	55 15 129		
17	Limit switch	31 24 104		
18	Support for limit switch	60000783		
19	Pan head screw M 4 x 25	20 10 215		
20	Retaining support	28 04 011		
21	Washer ø 4,3	22 02 302		
22	Trip cam	28 14 204		
23	Catch for limit switch rod	65000301		Part made to order only!
24	Dome head nut M 6	21 10 204		
25	Spring washer B 6	23 03 300		
26	Door handle bearer	35 01 163	2	
27	Pipe ø 22 x 1,5 x 235	65000424		
28	Door catch cpl.	65000412	2	
29	Hexagon nut M 8	21 01 305		
30	Trough cpl.	65000402		Part made to order only!
31	Rubber buffer ø 22 x 10	40 06 007	2	
32	Lens head countersunk screw M 5 x 15	20 12 324		
33	Clamping plate 1,5 x 13 x 38	65000417	2	
34	Door rail right cpl.	55 15 119		
35	Hexagon nut M 5	21 05 302		self-securing
36	Hexagon bolt M 4 x 10	20 01 313		
37	Front insert rail cpl.	65000407		
38	Roller spring	28 04 024	2	

GKTS 2600

Untergestell, Verkleidung, Vorhang
Base frame, panel, curtain
Châssis, habillage, rideau



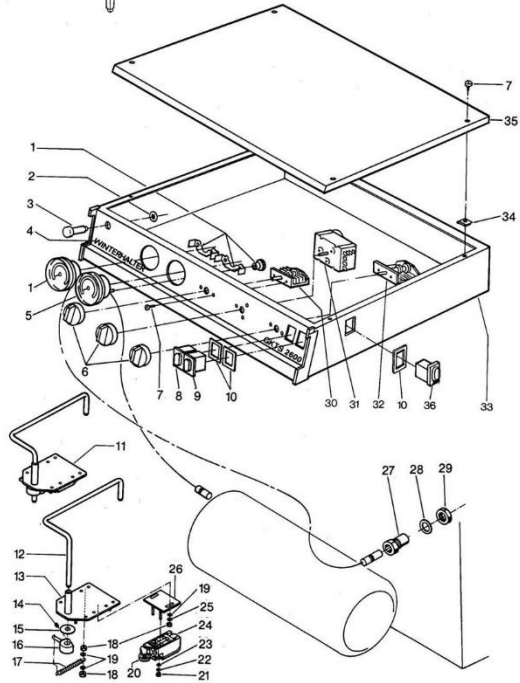
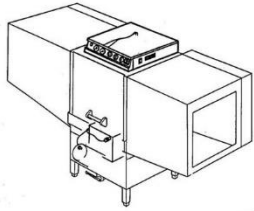
GKTS 2600

Base Frame, Panel, Curtain

Pos.	Designation	Part no.	Pcs.	Notes
1	Outside curtain 1,5 x 550 x 750	65001830		
2	Curtain rail cpl.	65001824	4	
3	Inside curtain 1,5 x 550 x 750	65001831		
4	Ledge for curtain	65001828	4	
5	Hexagon nut M 4	21 05 300		self-securing
6	Centre curtain cpl.	65001829	2	cons. of pos. 1 + 3, 2, 4, 5
7	Outside curtain cpl.	65001823	2	cons. of pos. 32 + 33, 2, 4, 5
8	Splash case left cpl.	65001776		Part made to order only!
n.p.	Splash case right	65001772		Part made to order only!
9	Splash case panel 1,0 x 161 x 1706	65001780		Part made to order only!
10	Washer ø 6,4	22 01 302		
11	Hexagon nut M 6	21 05 304		
12	Control box panel 130 x 150 x 680	80000473		Part made to order only!
13	Rear panel 1,0 x 1152 x 1511	80000396		Part made to order only!
14	Housing cpl.	65000505		Part made to order only!
15	Left panel 1,5 x 368,5 x 711	65000306		Part made to order only!
16	Washer ø 8,4	22 01 303		
17	Hexagon nut M 8	21 05 306		self-securing
18	Dome head nut M 4	21 10 302		
19	Plate AUF (open)	28 03 080		
20	Plate ZU (closed)	28 03 081		
21	Front panel	65000305		Part made to order only!
22	Foot 3/4" BSP	35 01 064		
23	Insert 3/4" BSP	35 01 063		
24	Supporting frame cpl.	65001491		Part made to order only!
25	Right panel 1,5 x 377 x 711	65000307		Part made to order only!
26	Hexagon nut M 6 x 10	20 01 332		as from mach. no. 214 508
27	Motor bracket cpl.	65002688		
28	U-profile	65002742		
29	Catch leading-in	31 10 069		
30	Cover for motor cpl.	65002691		
31	Transport motor	31 16 045		
32	Outside curtain 1,5 x 650 x 750	65001826		
33	Inside curtain 1,5 x 650 x 750	65001827		

GKTS 2600

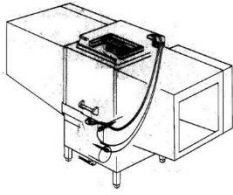
Elektroteile I
Electrical parts I
Matériel électrique I



GKTS 2600

Electrical parts I

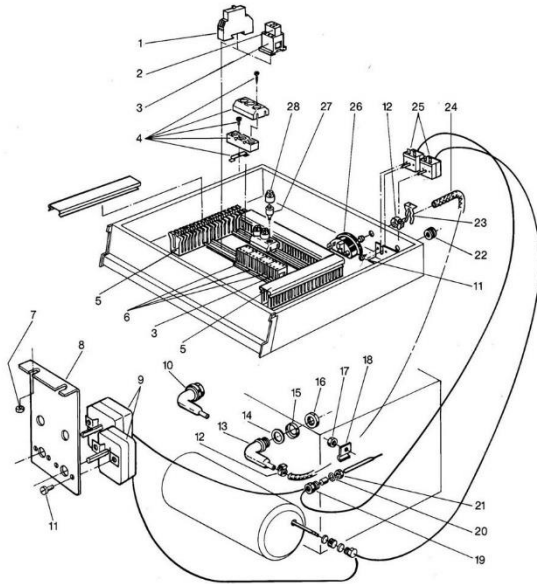
Pos.	Designation	Part no.	Pcs.	Notes
1	Thermometer 3500 mm 55°C	32 01 016		tank
2	Spring washer for pilot light	31 08 029		
3	Pilot light green	31 08 002		
4	Control box plate	65002004		No more available!!!
5	Thermometer 3500 mm 85°C	32 01 017		boiler
6	Control knob kpl.	55 19 036	3	
7	Sheet-metal screw 3,5 x 19	20 22 302		
8	Pressure key button white	31 24 128		washing
9	Pressure key button white	31 24 129		rinsing
10	Seal for switch			Replaced by pos. 8 or 9
n.p.	Table limit switch cpl.	75200189		for feed direction r-l
11	Table limit switch cpl.	75200188		for feed direction l-r
n.p.	Switching bow cpl.	75200187		for feed direction r-l
12	Switching bow cpl.	75200186		for feed direction l-r
13	Base plate	75009402		
14	Threaded pin	20 30 304		
15	Washer	75009413		
16	Switching ring	75009409		
17	Tension spring	28 04 002		
18	Hexagon nut M 5	21 01 303		
19	Washer ø 5,3	22 01 300		
20	Limit switch	80003235		
21	Hexagon nut M 4	21 02 302		
22	Spring washer B 5	23 03 302		
23	Washer ø 4,3	22 02 302		
24	Limit switch	80003235		
25	Spring washer B 4	23 03 304		
26	Limit switch supporting plate	75009405		
27	Gland for thermometer	32 01 030		
28	Seal ø 20 x ø 14,2 x 2,0	27 09 036		
29	Hexagon nut M 14 x 1 x 5	31 25 002		
30	Control switch	31 24 008		
31	Programme switch	31 05 120		
32	Rotary type switch	31 24 140		
33	Control box housing cpl.	65001848		Part made to order only!
34	Sheet-metal nut B 3,5	21 17 002		
35	Control box cover	65000312		Part made to order only!
36	Pressure switch white	31 24 175		from mach. no. 214 508



- 31 -

GKTS 2600

Elektroteile II
Electrical parts II
Matériel électrique II



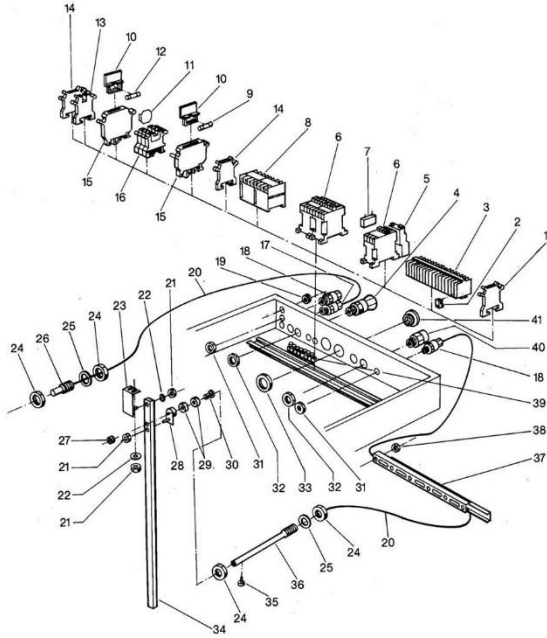
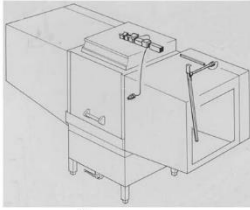
GKTS 2600

Electrical parts II

Pos.	Designation	Part no.	Pcs.	Notes
1	Wipe contact flick contactor	31 04 120		
2	Module	31 04 116	1	
3	Auxiliary contactor	31 04 115	2	
4	Fuse element	31 11 050	2	
5	Cable trunking BA 6 580 lg.	31 20 104		per metre
6	Auxiliary contactor	31 04 114	3	
7	Hexagon nut M 5	21 01 303		from mach. no. 214 501 onwards
8	Thermostat support	65002459		
9	Thermostat, measuring length 1,75 m	31 25 013		
10	Air chamber cpl.	55 04 024		cons. of pos. 13-16
11	Lens head screw M 4 x 8	20 10 310		
12	Wire hose clip 6,8 x 1	28 02 348		
13	Air chamber 3/4" BSP			Replaced by pos. 10
14	Seal \varnothing 36 x \varnothing 26 x 2	27 01 003		Old version
n.p.	O-Ring	27 07 066		New version
15	Supporting ring	62002875		
16	Bihexagonal nut	61004893		
17	Hexagon nut M 4	21 01 302		
18	Thermostat clip	55 19 011		
19	Gland for thermostat	31 25 001		
20	Seal \varnothing 20 x \varnothing 14,2 x 2,0	27 09 036		
21	Hexagon nut M 14 x 1 x 5	31 25 002		
22	Wire protecting sleeve	31 10 105		
23	Friction spring for level switch	31 26 001		
24	Hose \varnothing 5 x 3 x 1000	40 01 024		per metre
25	Thermostat, measuring length 2,1 m	31 25 015		until machine no. 203 410
26	Level switch black/yellow	31 26 018		
27	Fuse 16 A	31 11 084	6	
28	Screw-on cap with inspection hole	31 11 090	6	
n.p.	Contact module	31 04 130	3	from mach. no. 214 508
n.p.	Auxiliary contactor	31 04 115	4	
n.p.	Time-lag relay (413 - 1,5 - 30 s.)	31 04 083	1	Start time delay
n.p.	Auxiliary contactor CA2-SK11	31 04 114		defoaming agent dosing as from mach. no. 174 137
n.p.	Fleeting relay	31 04 120		
n.p.	Multifunctional relay	31 04 131		

GKTS 2600

Elektroteile III
Electrical parts III
Matériel électrique III



GKTS 2600

Electrical parts III

Pos.	Designation	Part no.	Pcs.	Notes
1	Terminal block yellow/green	31 09 059	1	
2	Staples	31 09 012	6	
3	Terminal strip 26-fold	55 19 077		
4	Cable gland PG 21	31 10 070		with pull relief
5	Overload relay 5,7 - 18,9 A	31 04 193	1	
6	Contactora A 16	31 04 162	2	
n.p.	Contactora A 9	31 04 161		
7	RC-member cpl.	61002141	1	
8	Mini-contactora	31 04 068	2	
9	Fuse 1 A 250 V	31 11 039	6	
10	Two-pin fuse bridge	31 09 072	7	
11	Isolating disk	31 09 066	2	
12	Fuse 6,3 A 250 V	31 11 043	2	
13	Terminal block blue	31 09 058	1	
14	Protecting wire terminal yellow/green	31 09 064	2	
15	Universal fuse terminal	31 09 063	7	
16	Terminal block grey	31 09 057	9	
17	Cable gland PG 16	31 10 049	1	
o.P.	Hexagon nut PG 16	31 10 110	1	
18	Cable gland PG 9	31 10 042	8	
19	Wire protecting sleeve	31 10 105	2	
20	Solenoid switch	31 24 136	2	
21	Hexagon nut M 6	21 01 304		
22	Washer ø 6,4	22 01 302		
23	Support cpl.	65001271		
24	Locking nut 3/4" BSP x 10	30 09 209		
25	Seal ø 24 x 19,5 x 1,5	27 09 010		
26	Fixing pipe cpl. 67 lg.	65001269		Part made to order only!
27	Hexagon nut	21 01 301		
28	Magnet support cpl.	65004954		Incl. pos. 29,30,27,21
29	Magnet	31 24 112		
30	Countersunk head screw M 3 x 16	20 08 205		
31	Hexagon nut PG 9	31 10 043		
32	Hexagon nut PG 21	31 10 071	3	
33	Hexagon nut PG 29	31 10 047	2	
34	Lever	65001272		
35	Hexagon bolt M 4 x 10	20 01 313		
36	Fixing pipe cpl. 267 lg.	65004955		Incl. pos. 20,24,25,35
37	Cable trunking 410 lg.	31 20 104		per metre
38	Hexagon nut M 4	21 05 300		self-securing
39	Protecting wire terminal	31 09 094		
40	Connection nipple PG 21	31 10 086	2	
41	Locking screw PG 29	31 10 026	2	